

ORANGE COUNTY MODEL ENGINEERS WEBSITE: www.ocmetrains.org

Spotlight on the Raise Foundation Run & OCME's Spring Meet

On Saturday, March 27, 2010 OCME hosted the Raise Foundation's Family Festival Fun Day, which featured free train rides, face painting, arts & crafts, fire trucks, an ambulance, live music, bounce houses, resource booths from other participating organizations and food for purchase. Our trains ran from 10:00 a.m. to 11:30 a.m. and 12:30 p.m. to 2:30 p.m. and during that time we gave fun rides to almost 1,300 people. We can be proud of ourselves in that we had lots of trains of every type (solar-powered, steam and gas) and crews for all these trains. Here are our trains queued up for the start of the afternoon runs.



“What Did You Shay?”

Pictures courtesy of Ken Matassa

WHAT A GREAT TURNOUT WE HAD OF ENGINEERS, CONDUCTORS AND ALL AROUND GOOD HELPERS!



“Gentlemen, Start Your Engines!”

O.C.M.E., P.O. Box 3216, Costa Mesa, CA 92628-3216, (949) 54-TRAIN. Editor and Publisher: Bill Pemberton. bill.pemberton@ca.rr.com; 2944 Redwood Avenue, Costa Mesa, CA 92626-3741. Our railroad is located in Fairview Park, 2480 Placentia Avenue, Costa Mesa, CA.



A FIRST CLASS RAILROAD

BY

President Jim Ferguson

It Takes All of Us

A friend is building a skating rink. Unfortunately, he started with uneven ground and the water keeps ending up on one side of the rink. Water's like that, and you need a lot of time and power and money if you want to change it. One person, working as hard as he can, has little chance of persuading water to change. Last work day a bunch of us who showed up put some power in grading the new siding on the switchback. I looked at that and said to myself, "Wow this is going to take more than one work day to hand grade!" But, after just a few hours it was done. The power of people!

Run days are kind of like that. We have been running at record numbers and have had plenty of people to run trains. It is great to see an active and vibrant club. By the time you read this the Spring Meet will have already taken place. I can tell by the enthusiasm that it is going to be a great turn out and great time. The meets are the best time of the year for the Club. People get together and talk trains meet new people and see old friends from other clubs. I hope you make it out for the fun that Russ Green (Chairman) and Dixon Sheldon (Co-Chairman) have cooked up. They have a lot planned for the three days, so it should be the best Spring Meet in our history.

Overall the club is working hard to persuade water to change direction. We are trying to get many of the things moving that we have talked about for years. More on that later. For now I hope everyone comes out and uses their skills so we can continue to make our railroad a truly First Class One! **Thanks for all you do.**

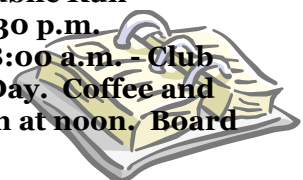
2010 O.C.M.E. Board of Directors

President.....Jim Ferguson (714) 598-9248
VP-Facilities.....Myron Peterson (949)494-9655
VP-Operations.....Mike Getscher (714) 903-9349
Treasurer.....Paul Hammond (818)620-3480
Secretary.....Larry Ogle (714) 539-9382

Appointed Officers:
Mackerel Flats Mercantile Store Co-Mgrs:
Betty Cummings.....*82(714) 979-9390
Janet Trom.....(714) 546-4721

DATES TO REMEMBER

May 1st Sat.: General Meeting 8:00 a.m. - Club house followed by Work Day. Coffee and donuts at meeting -- Lunch at noon. Board Meeting 1:00 p.m.
May 15th & 16th Sat. & Sun. : Public Run Weekend 10:00 a.m. to 3:30 p.m.
June 5th Sat.: General Meeting 8:00 a.m. - Club house followed by Work Day. Coffee and donuts at meeting -- Lunch at noon. Board Meeting 1:00 p.m.



THE WAY FREIGHT is published by **ORANGE COUNTY MODEL ENGINEERS, INC. (OCME)**, a non-profit California Corporation which has created **THE MACKEREL FLATS & GOAT HILL JCT. RAILROAD** in Fairview Park, Costa Mesa, California. It is the intent of OCME to educate and enlighten people of all ages in the rich railroad heritage of the United States of America and other parts of the world. As a qualified non-profit organization, all donations are fully tax deductible under IRS ruling 501 (C) (3). Views and opinions expressed in **THE WAY FREIGHT** are not necessarily those of **OCME**. Material for **THE WAY FREIGHT** may be submitted to Bill Pemberton, 2944 Redwood Avenue, Costa Mesa, CA 92626-3741 or bill.pemberton@ca.rr.com.

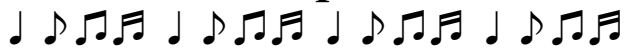
Spring Meet 2010

From the 22nd through the 25th of April 2010 we held our ninth annual Spring Meet. Over 100 people attended and on Saturday over 25 engines were running and nearly half of them were “steam” driven. Our friends from Nevada even brought a 3³/₄ scale 0-6-0 steamer (picture on Page 4). What a wonderful time was shared by all through the fellowship of sharing stories, meeting new friends and operating trains. We enjoyed the visitation of many from throughout Southern California and as far north as Carson City, Nevada. All truly came together to share the railroading experience on our wonderful layout. My appreciations to all of you who help make this possible. I include many of you unsung heroes who come out on Wednesday and Saturday to work your magic on our track: we had zero problems, Thank You. My special debt of gratitude is for Dixon and Carroll for the puppets and all of the children’s activities (picture on Page 2A). One of our goals is to ensure that this is a “family” outing, be it individual families, or our railroad families. You each contributed to the success of this special weekend by just being here. Thank you all for participating (new and old members alike) and for being a part of and involved with the Orange County Model Engineer Family.

Russell W. Green



“I’ve been workin’ on the railroad” in April



Alex Acuña*, Tim* & Cher* Bartlett, Dave Bowen*, Mel Bresee, Terry* & Betty* Cummings, Shaun & Connor Dahl, Marilyn Donnelly, Eric Engle, Michael Getscher, Paul Hammond*, Erik Hansen*, Joe* & Carolyn* Hayes, Hank Hornsveld*, Carol Hunneyman, Ian & Amy Johnston, Norm Jobse*, Gary Kimble, Jim Kontur*, Ken Matassa*, Juanita Matassa*, Dan O’Brien, Larry Ogle*, Phil Parker, Bob Platfoot*, Jerry Platfoot*, Brock* & Matthew* Seaton, Gary Sharp*, Dixon Sheldon, Mike Springer, Glenn Swain*, Lois Taube, Kevin, Lori & Jeff Tolan, Steve* & Janet Trom*, Chuck Trom, Jack Young.

“*” signifies working both Saturday and Sunday..



Many “thanks” to the April Birthday Party Volunteers.

Brock Seaton, Tim Bartlett.

WELCOME NEW MEMBERS

We have had some new members join our Club:
Tim & Cher Bartlett from Tustin.

The Thomas Family - Bryan, Michelle & their son
Luke from Placentia.

Ian & Amy Johnston from Huntington Beach.

Kevin Lieber from Rancho Santa Margarita.

Please say “Hi” the next time you see them at
Mackerel Flats & Goat Hill Junction.

PLAN AHEAD FOR OCME’S 19TH ANNUAL FALL MEET

**The dates will be Thursday, September
16th thru Sunday, September 19th, 2010**

Here are 2 pictures of the Platfoot Yard showing some fine trains owned by our members and then joined by our train friend from Nevada with the 3 3/4 scale 0-6-0 steamer. What a beauty!



Prior to the our 2010 Spring Meet Alex Acuña, the Club's Web Master, put a notice on our web site that there would be a caboose photo shoot. Pictured below is the result



Photos on this page courtesy of Russ Green & Dave Bowen