

ORANGE COUNTY MODEL ENGINEERS WEBSITE: www.ocmetrains.org

~ Halloween Pumpkin Patch At OCME ~

by Russ Green

A committee has been formed to explore the possibilities of a Pumpkin Run combined with a Pumpkin Patch filled with pumpkins for children to come and gather. We're exploring possibilities of involving other civic organizations and schools to help in our quest. We are looking at two possible dates: October 16th (one of the public run days) or the 30th of October which will coincide with the fall camp out at the park. Look for more details in the following weeks. If you have questions, ideas, or would like to support this community event sponsored by OCME, please contact Russ Green (858-748-4009) or Wendy Dahl (714-812-4567).



June No Host Camp Out

by Dixon Sheldon

If you missed out shame on me for not inviting you. I found out about the camping permit when we were at the Club about a week before the camp out date. I called and e-mailed as many people as I could think of. Russ, Dutra's, Hayes, Sheldons, Platfoots, Acuña. WE all had a great time as usual. Went out to dinner the first night to Acapulco and had a nice meal. Carroll had some coupons so we were able to share the coupons with the entire group. When we got back to OCME we saw another group of people gathered near the campground we went over to ask what they were doing. Found out they were radio operators and they get together every year at this time and do radio stuff all weekend. We let them know they were welcome to come by and if we were running trains to flag us down and we could give them a ride. Went back to the campground and enjoyed the evening. Saturday we got out our trains thanks to Alex. Nikki got out her electric loco. Glen had his steamer with the combine car and the flats with their old time equipment on each car. We played trains, ate lunch and planned a potluck. After dinner we got as many cars as we could 32 and hooked up three engines and triple headed into the evening. When we got to the station we stopped and asked the radio operators if they wanted to ride they said they were waiting for the Space Station to go by if we could wait for them they would gladly ride.

{See **June**, Page 3}

O.C.M.E., P.O. Box 3216, Costa Mesa, CA 92628-3216, (949) 54-TRAIN. Editor and Publisher: Bill Pemberton. bill.pemberton@ca.rr.com; 2944 Redwood Avenue, Costa Mesa, CA 92626-3741. Our railroad is located in Fairview Park, 2480 Placentia Avenue, Costa Mesa, CA.



A FIRST CLASS RAILROAD

BY

President Jim Ferguson

The Orange County Model Engineers will be hosting its 19th annual Fall Meet from Thursday, September 16th through Sunday, September 19th 2010. We are making preparations, and are working hard for all to have an enjoyable time.

O.C.M.E. will be offering limited dry camping spaces for RV's, motor homes, campers and tents. These spaces will be on a first come, first served basis beginning on Thursday, September 16th.

The Fall Meet weekend will be a busy one starting with Friday night at 5:30 p.m., with a wonderful Get Together Dinner. Saturday morning we will offer breakfast. A BBQ lunch of hot dogs/hamburgers will be available from the Lions' Club and rounding out the day will be a wonderful catered dinner by Newport Rib Co. on Saturday at 6:00 p.m. Sunday morning we will be serving a pancake breakfast.

Please use the enclosed reservation form for any or all meals.

For OCME Members: The Fall Meet is a terrific opportunity to come out and support your club and visit with other rail fans. There will be a wide range of equipment operating on the railroad with a number of visiting club members bringing their locomotives and rolling stock.

Please contact any Board Member (phone numbers on the bottom of this page of this Way Freight) to indicate your availability to work and they will assist you with scheduling and job assignments. The members of our club are terrific and generous. We will have a good time showing our visiting friends and the public our hospitality and the fun and dedication O.C.M.E. has!

{See **President**, Page 3}

2010 O.C.M.E. Board of Directors

President.....Jim Ferguson (714) 598-9248
VP-Facilities.....Myron Peterson (949)494-9655
VP-Operations.....Mike Getscher (714) 903-9349
Treasurer.....Paul Hammond (818)620-3480
Secretary.....Larry Ogle (714) 539-9382

Appointed Officers:

Mackerel Flats Mercantile Store Co-Mgrs:

Betty Cummings.....*82(714) 979-9390
Janet Trom.....(714) 546-4721

DATES TO REMEMBER

August 7th Sat.: General Meeting 8:00 a.m. - Club house followed by Work Day. Coffee and donuts at meeting -- Lunch at noon. Board Meeting 1:00 p.m.

August 21st & 22nd Sat. & Sun. : Public Run Weekend 10:00 a.m. to 3:30 p.m.

September 11th Sat.: General Meeting 8:00 a.m. Club house followed by Work Day. Coffee and donuts at meeting -- Lunch at noon. Board Meeting 1:00 p.m.

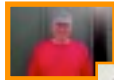
September 16th - 19th: OCME's 19th Annual Fall Meet

THE WAY FREIGHT is published by **ORANGE COUNTY MODEL ENGINEERS, INC. (OCME)**, a non-profit California Corporation which has created **THE MACKEREL FLATS & GOAT HILL JCT. RAILROAD** in Fairview Park, Costa Mesa, California. It is the intent of OCME to educate and enlighten people of all ages in the rich railroad heritage of the United States of America and other parts of the world. As a qualified non-profit organization, all donations are fully tax deductible under IRS ruling 501 (C) (3). Views and opinions expressed in **THE WAY FREIGHT** are not necessarily those of **OCME**. Material for **THE WAY FREIGHT** may be submitted to Bill Pemberton, 2944 Redwood Avenue, Costa Mesa, CA 92626-3741 or bill.pemberton@ca.rr.com.



**Our Members Who Have Been
“In The Spotlight. . .” (so far)**

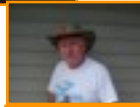
June, 2006 - Bob Brooks



July, 2006 - Carol Hunneyman



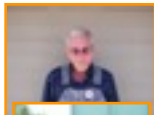
August, 2006 - Terry Cummings



Sept., 2006 - Kevin Tolan



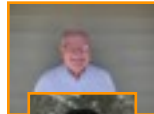
Oct., 2006 - Allen Stephens



Nov., 2006 - Norm Jobse



Dec., 2006 - Dick Zeleznikar



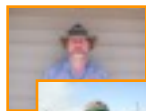
Jan., 2007 - Jim Ferguson



March, 2007 - Rowena Asuncion-Duong



April, 2007 - Gary Sharp



June, 2007 - Raymond Hill



July, 2007 - Bob Platfoot



September, 2007 - Glenn Swain



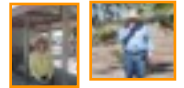
Nov., 2007 - Bob Osborne



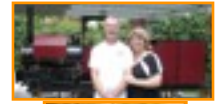
Feb., 2008 - Derek & Claire Marsden



April, 2008 - Kevin & Donna O'Connor



June, 2008 - Steve & Janet Trom



July, 2008 - Bob & Margie Fackiner



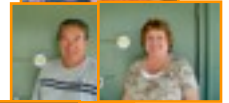
August, 2008 - Russ Green



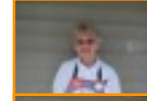
Sept., 2008 - Vern & Anne Lockhart



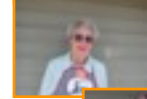
Nov., 2008 - Jim & Kathy Marsden



Dec., 2008 - Lois Taube



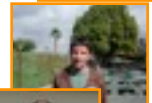
Feb., 2009 - Marilyn Donnelly



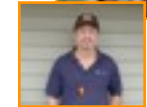
June, 2009 - Paul Hammond



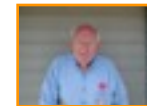
Nov., 2009 - Doug Maywald



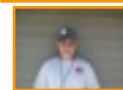
Feb., 2010 - Mike Getscher



April, 2010 - Jim Kontur



June, 2010 - Eric Engle



July, 2010 - Hunter Ferguson



ARE YOU NEXT???